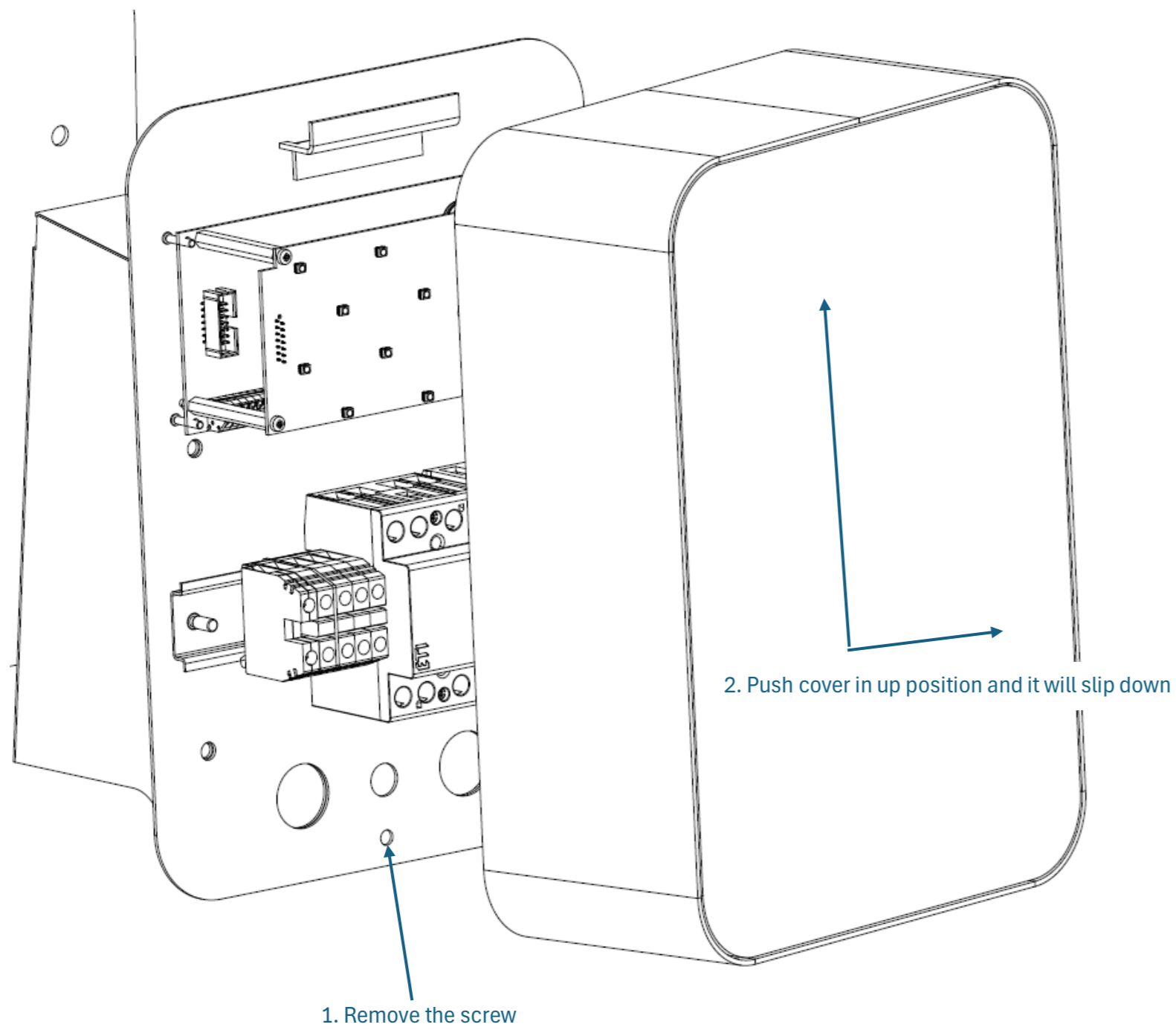
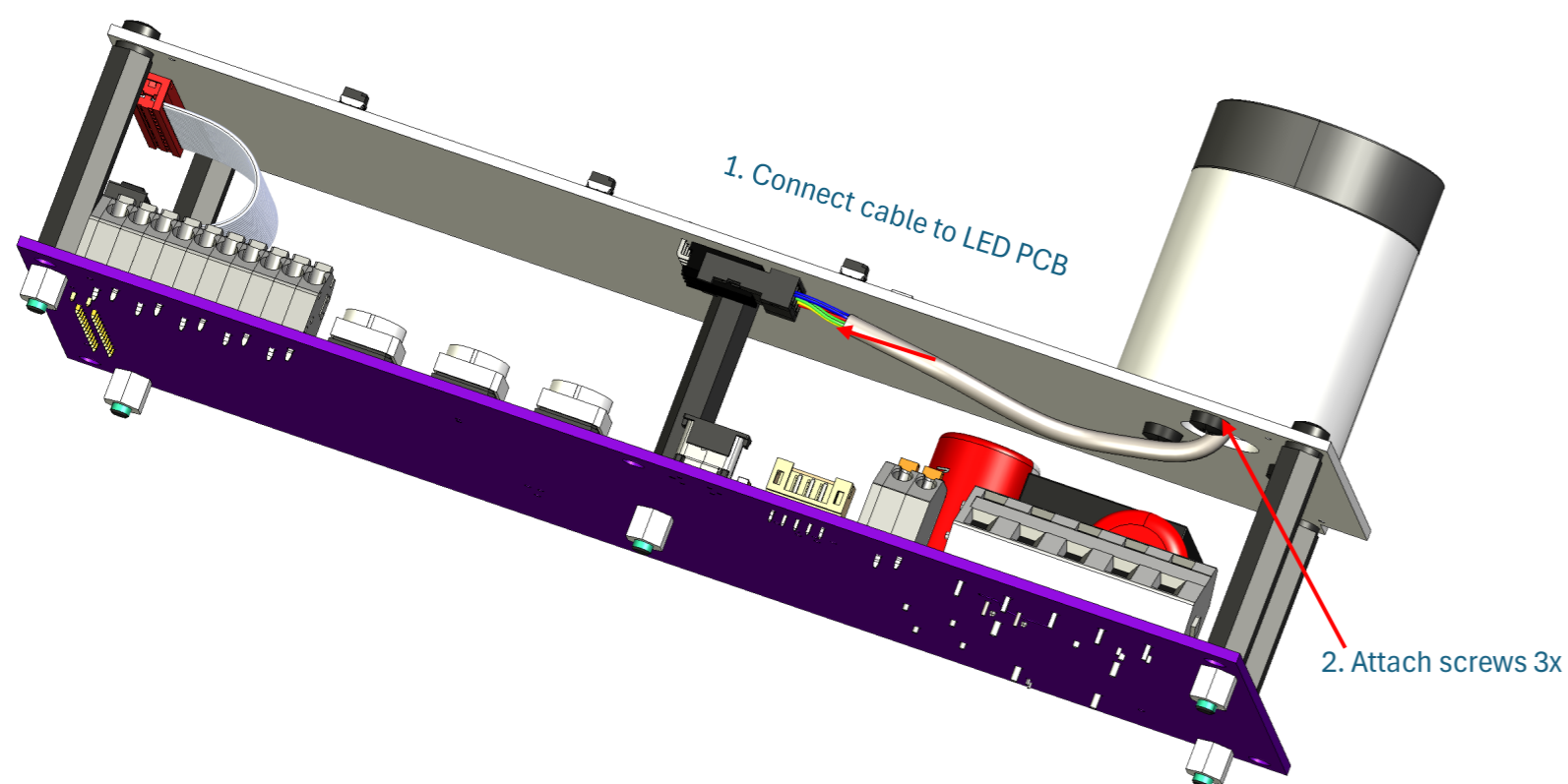


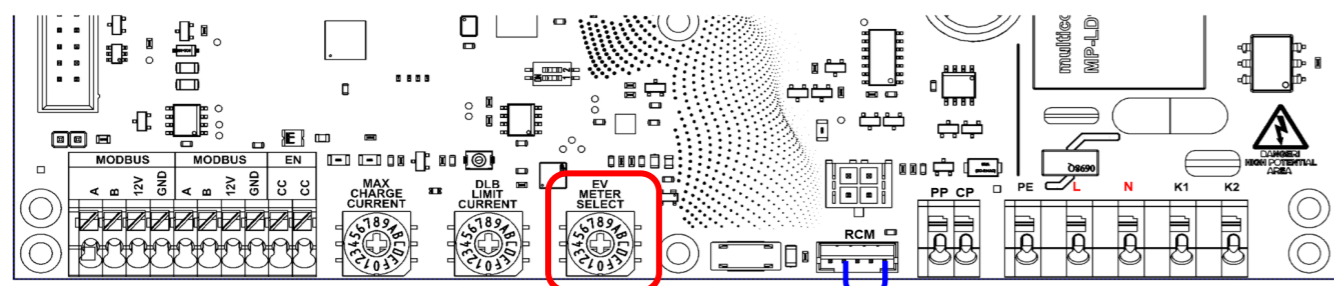
**1. Remove cover (2 steps)**



**2. Connect RFID module to PCB and fix it with screws (2 steps)**



**3. SET UP (main PCB)**



**MAINS ENERGY METER SELECTION + EXTRA SETTINGS rotary selector**

Position:

14. "E" Erase all RFID keys & disable lock/unlock with keys functionality. Set the selector before powering up then after boot wait for all setup displays blinks to finish and a steady green light is displayed. Set the rotary selector back to setting 0...2 and power cycle the charging station.

15. "F" Learn new RFID keys and enable lock/unlock with keys functionality. Set the selector before powering up and after boot wait for all setup display blinks to finish and the charging station indicator is lit in dim white light. Present compatible 13.56Mhz Mifare keys or a mobile phone with Key card emulation support. A newly recognized card is signaled with two bright white blinks. When finished learning new RFID cards set the selector back to setting 0...2 and power cycle the charging station.

**4. Close the cover (2 steps)**

